



K40-0621560 Matryx 163/65 Rear Bumper



INTRODUCTION

PLEASE RETAIN THIS DOCUMENT FOR FUTURE REFERENCE

If your ZBROZ® product has a damaged or missing part, please contact customer service directly and a new replacement part will be sent to you immediately.

For warranty issues, please return to the place of installation and contact ZBROZ®.

Business hours are Monday through Friday 8AM-5PM MST.

PHONE: (435) 753-7774

EMAIL: customerservice@zbrozracing.com

WEBSITE: www.zbrozracing.com

LIMITED LIFETIME WARRANTY

ZBROZ® will warranty to the original purchaser any failed ZBROZ® suspension product in the event of failure due to construction or material failure of the product. You will be required to contact ZBROZ® customer service with descriptions and photos that resulted in failure.

ZBROZ® builds suspension products to meet and exceed your expectations in quality, performance and durability. All ZBROZ® suspension products are rigorously tested during development and prototype parts are pushed to the limit by professional industry athletes, backcountry athletes and race teams. ZBROZ® Limited Lifetime Warranty excludes the following wear parts as these parts are considered defective when worn: Ball Joints, Bushings, Bump Stops, Tie Rod Ends, Heim Joints, Shock Absorbers Product purchased directly from ZBROZ® has a 90 day return policy on uninstalled products from the date of purchase (may be subject to restocking fee). Uninstalled product returns must be in the original ZBROZ® packaging. Please call (435) 753-7774 to get an RMA# for any return. Customer is responsible for shipping costs back to Zbroz Racing. Returns without RMA# will be refused. Contact ZBROZ® directly about any potentially defective parts prior to removal from vehicle.

ZBROZ® is NOT responsible for any subsequent damages to any related vehicle parts due to misuse, abuse, improper installation, or lack of maintenance. Furthermore, ZBROZ® reserves the right to change, modify or cancel this warranty without prior notice.

FOLLOW INSTRUCTIONS TO ENSURE PROPER INSTALLATION

READ INSTRUCTIONS THOROUGHLY AND COMPLETELY BEFORE BEGINNING INSTALLATION. INSTALLATION BY A CERTIFIED PROFESSIONAL MECHANIC IS HIGHLY RECOMMENDED. ZBROZ® IS NOT RESPONSIBLE FOR ANY DAMAGE OR FAILURE RESULTING FROM IMPROPER INSTALLATION.

 **TOOLS:**

- 1" End Wrench or Crescent Wrench (1)
- Drill and 3/16" Drill bit (1)
- Rivet gun (1)

 **PARTS:**

- Short Rivets (14)
- Long Rivets (14)
- Large Diameter Washers (22)
- Grab Bar (1)
- Grab Bar Nuts (2)
- Right Hand Tunnel Support Plate (1)
- Left Hand Tunnel Support Plate (1)
- Right Hand Grab Bar Plate (1)
- Left Hand Grab Bar Plate (1)
- Small Diameter Washers (2)

Step 1 — Safety Warning



- **MISUSE OF THIS PRODUCT COULD LEAD TO INJURY OR DEATH.** You should never operate your vehicle under the influence of alcohol or drugs. All raised vehicles have increased risk including blind spots; damage, injury and/or death can occur if these instructions are not followed.
- Suspension systems or components that enhance the on and off-road performance of your vehicle may cause it to handle differently than it did from the factory. Extreme care must be used to prevent loss of control or vehicle rollover during abrupt maneuvers.
- Always operate your vehicle at reduced speeds to ensure your ability to control your vehicle under all driving conditions. Failure to drive safely may result in serious injury or death to driver and passengers. You should never operate your vehicle under the influence of alcohol or drugs.
- Driver and passengers must **ALWAYS** wear your seat belts, avoid quick sharp turns and other sudden maneuvers. ZBROZ® does not recommend the combined use of suspension lifts, body lifts, or other lifting devices.

- Constant maintenance is required to keep your vehicle safe. Thoroughly inspect your vehicle before and after every off-road use.
- It is the responsibility of the retailer and/or the installer to review all state and local laws, with the end user of this product, related to bumper height laws and the lifting of their vehicle before the purchase and installation of any ZBROZ® products.
- It is the responsibility of the driver to check their surrounding area for obstructions, people, and animals before moving the vehicle.

Step 2 — Installation Warning



- Use caution during all disassembly and assembly steps to insure not to cause damage to any vehicle

components and parts included in this kit.

- Included instructions are guidelines only for recommended procedures and are not meant to be definitive. Installer is responsible to insure a safe and controllable vehicle after performing modifications.
- ZBROZ® recommends the use of an OE Service Manual for model/year of vehicle when disassembly and assembly of factory and related components.
- Unless otherwise specified, tighten all bolts and fasteners to standard torque specifications listed within the OE Service Manual.

Step 3



- **(IMAGE 1)** Begin by removing the 12 T25 torx screws on the stock rear bumper. once you have that removed set it aside.
- Remove any decals or stickers you don't want to show through and clean thoroughly.
- Separate your short rivets form your long rivets. There are 14 short rivets and 14 long rivets.
- **(IMAGE 2)** The long rivets will go through the thicker grab bar plate.
- **(IMAGE 3)** The short rivets will go through the thinner tunnel support plate.

Step 4

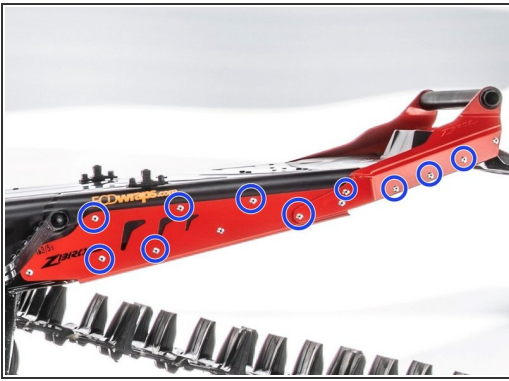


- **(IMAGE 1)** Begin by holding up the tunnel support plate to the side of the tunnel (**NOTE:** there is a right and left side) and inserting 2 of the shorter rivets into the factory/existing holes to line up the bumper.

⚠ (IMAGE 2) Each rivet will have a washer placed behind it.

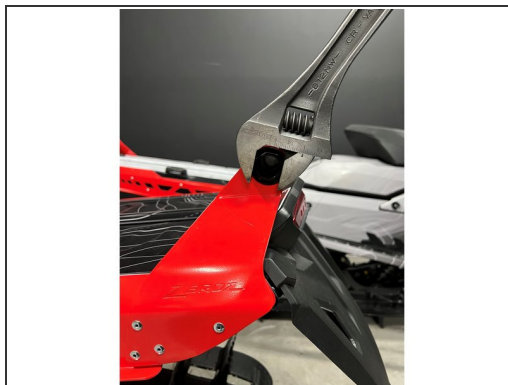
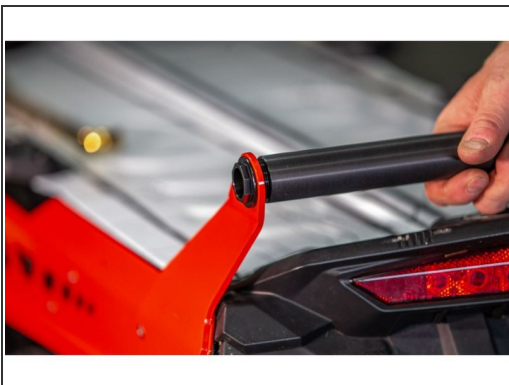
- With a washer behind each rivet, begin tightening the middle rivet first then the two outside rivets next. DO NOT tighten completely, only enough so it is held in place
- **(IMAGE 3)** With the 2 rivets holding the tunnel support in place, locate 2 of the longer rivets and put them through the grab bar plate into the factory holes.
- Now that everything is aligned go ahead and completely tighten the 4 rivets you have in place. Be sure there is a washer behind every rivet.

Step 5



- **(IMAGE 1 & 2)** Once you have the first four rivets in place, use the new bumper as a guide to drill the 10 leftover rivet holes with a 3/16 drill bit.
- **(IMAGE 3)** Locate 5 more short rivets and washers and finish riveting on the tunnel support plate.
- **(IMAGE 3)** Locate 5 more long rivets and washers and finish riveting on the grab bar plate.
- **(i) NOTE:** The 2 smaller diameter washers will go in the very rear mounting locations as shown in **(IMAGE 3)**
- Repeat the above steps on the other side.

Step 6



- **(IMAGES 1 & 2)** With a crescent wrench install the grab handle with nut on either end.
- **(IMAGE 3)** The completed install will look like this.

By installing this product, you acknowledge that the suspension of this vehicle has been modified. As a result, this vehicle may handle differently than that of factory-equipped vehicles. As with any vehicle, extreme care must be used to prevent loss of control or roll-over during sharp turns or abrupt maneuvers. Always wear seat belts, and drive safely, recognizing that reduced speeds and specialized driving techniques may be required. Failure to drive this vehicle safely may result in serious injury or death. Do not drive this vehicle unless you are familiar with its unique handling characteristics and are confident of your ability to maintain control under all driving conditions. Some modifications (and combinations of modifications) are not recommended and may not be permitted in your state. Consult your owner's manual, the instructions accompanying this product, and state laws before undertaking these modifications. You are responsible for the legality and safety of the vehicle you modify using these components.