



# K40-0621501 Polaris Matryx Front Bumper



## INTRODUCTION

# PLEASE RETAIN THIS DOCUMENT FOR FUTURE REFERENCE

If your ZBROZ® product has a damaged or missing part, please contact customer service directly and a new replacement part will be sent to you immediately.

For warranty issues, please return to the place of installation and contact ZBROZ®.

Business hours are Monday through Friday 8AM-5PM MST.

PHONE: (435) 753-7774

EMAIL: [customerservice@zbrozracing.com](mailto:customerservice@zbrozracing.com)

WEBSITE: [www.zbrozracing.com](http://www.zbrozracing.com)

## **LIMITED LIFETIME WARRANTY**

ZBROZ® will warranty to the original purchaser any failed ZBROZ® suspension product in the event of failure due to construction or material failure of the product. You will be required to contact ZBROZ® customer service with descriptions and photos that resulted in failure.

ZBROZ® builds suspension products to meet and exceed your expectations in quality, performance and durability. All ZBROZ® suspension products are rigorously tested during development and prototype parts are pushed to the limit by professional industry athletes, backcountry athletes and race teams. ZBROZ® Limited Lifetime Warranty excludes the following wear parts as these parts are considered defective when worn: Ball Joints, Bushings, Bump Stops, Tie Rod Ends, Heim Joints, Shock Absorbers Product purchased directly from ZBROZ® has a 90 day return policy on uninstalled products from the date of purchase (may be subject to restocking fee). Uninstalled product returns must be in the original ZBROZ® packaging. Please call (435) 753-7774 to get an RMA# for any return. Customer is responsible for shipping costs back to Zbroz Racing. Returns without RMA# will be refused. Contact ZBROZ® directly about any potentially defective parts prior to removal from vehicle.

ZBROZ® is NOT responsible for any subsequent damages to any related vehicle parts due to misuse, abuse, improper installation, or lack of maintenance. Furthermore, ZBROZ® reserves the right to change, modify or cancel this warranty without prior notice.

**FOLLOW INSTRUCTIONS TO ENSURE PROPER INSTALLATION**

***READ INSTRUCTIONS THOROUGHLY AND COMPLETELY BEFORE BEGINNING INSTALLATION. INSTALLATION BY A CERTIFIED PROFESSIONAL MECHANIC IS HIGHLY RECOMMENDED. ZBROZ® IS NOT RESPONSIBLE FOR ANY DAMAGE OR FAILURE RESULTING FROM IMPROPER INSTALLATION.***



**TOOLS:**

- [Drill and 3/16" Drill bit](#) (1)
- [Rivet gun](#) (1)
- [10mm Socket](#) (1)
- [10mm End Wrench](#) (2)



**PARTS:**

- [Short Rivets](#) (12)
- [Long Rivets](#) (10)
- [Front bumper tube](#) (1)
- [Bumper Bash Plate](#) (1)
- [Skid Plate](#) (1)
- [Aluminum Spacer](#) (1)
- [Hex Bolt](#) (3)

## Step 1 — Safety Warning



- **MISUSE OF THIS PRODUCT COULD LEAD TO INJURY OR DEATH.** You should never operate your vehicle under the influence of alcohol or drugs. All raised vehicles have increased risk including blind spots; damage, injury and/or death can occur if these instructions are not followed.
- Suspension systems or components that enhance the on and off-road performance of your vehicle may cause it to handle differently than it did from the factory. Extreme care must be used to prevent loss of control or vehicle rollover during abrupt maneuvers.
- Always operate your vehicle at reduced speeds to ensure your ability to control your vehicle under all driving conditions. Failure to drive safely may result in serious injury or death to driver and passengers. You should never operate your vehicle under the influence of alcohol or drugs.
- Driver and passengers must **ALWAYS** wear your seat belts, avoid quick sharp turns and other sudden maneuvers. ZBROZ® does not recommend the combined use of suspension lifts, body lifts, or other lifting devices.

- Constant maintenance is required to keep your vehicle safe. Thoroughly inspect your vehicle before and after every off-road use.
- It is the responsibility of the retailer and/or the installer to review all state and local laws, with the end user of this product, related to bumper height laws and the lifting of their vehicle before the purchase and installation of any ZBROZ® products.
- It is the responsibility of the driver to check their surrounding area for obstructions, people, and animals before moving the vehicle.

## Step 2 — Installation Warning

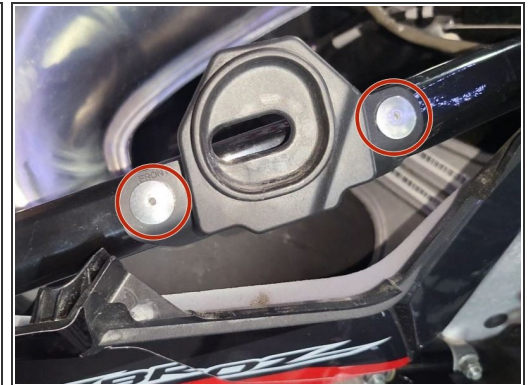
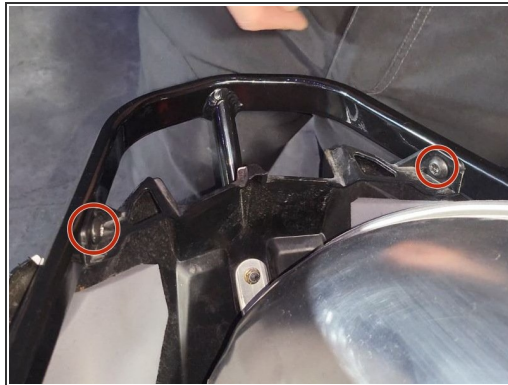
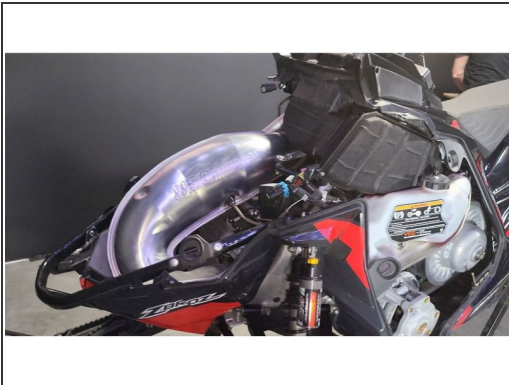


- Use caution during all disassembly and assembly steps to insure not to cause damage to any vehicle

components and parts included in this kit.

- Included instructions are guidelines only for recommended procedures and are not meant to be definitive. Installer is responsible to insure a safe and controllable vehicle after performing modifications.
- ZBROZ® recommends the use of an OE Service Manual for model/year of vehicle when disassembly and assembly of factory and related components.
- Unless otherwise specified, tighten all bolts and fasteners to standard torque specifications listed within the OE Service Manual.

### Step 3



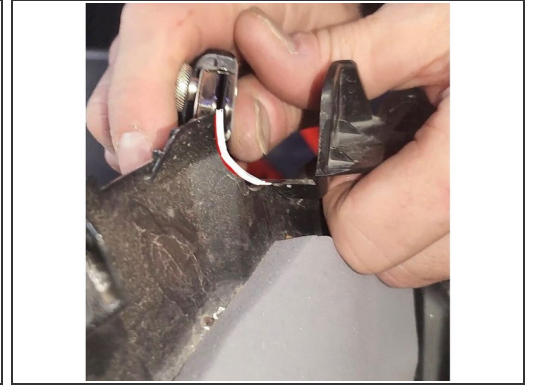
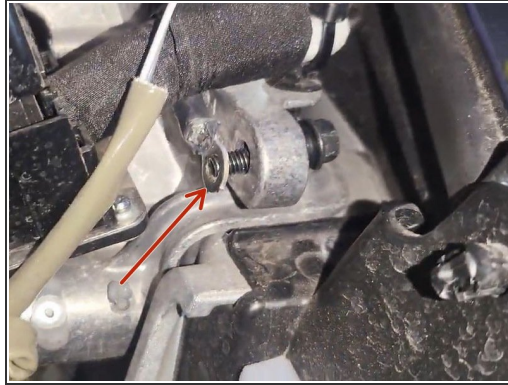
- **IMAGE 1** Begin by removing the hood and side panels.
- **IMAGE 2** Next, remove the two T40 torx screws near the front of the bumper.
- **IMAGE 3** Using a 3/16" drill bit, remove the two rivets that hold the hood clips to the bumper. Set those aside. They will be reused in assembly. Repeat this step on the opposite side.

## Step 4



- **IMAGE 1** Using a 10mm remove the nut and bolt holding the bumper to the belly of the sled. Hang on to the nut but the bolt will be replaced with one provided.
- **IMAGE 2** Next remove the spring that holds the pipe in place. You do not need to remove the pipe, just the spring.
- **IMAGE 3** Now remove the 10mm nut and bolt holding the bumper tubes to the frame. Reuse the stock nut but set the bolt aside, it will be replaced.

## Step 5



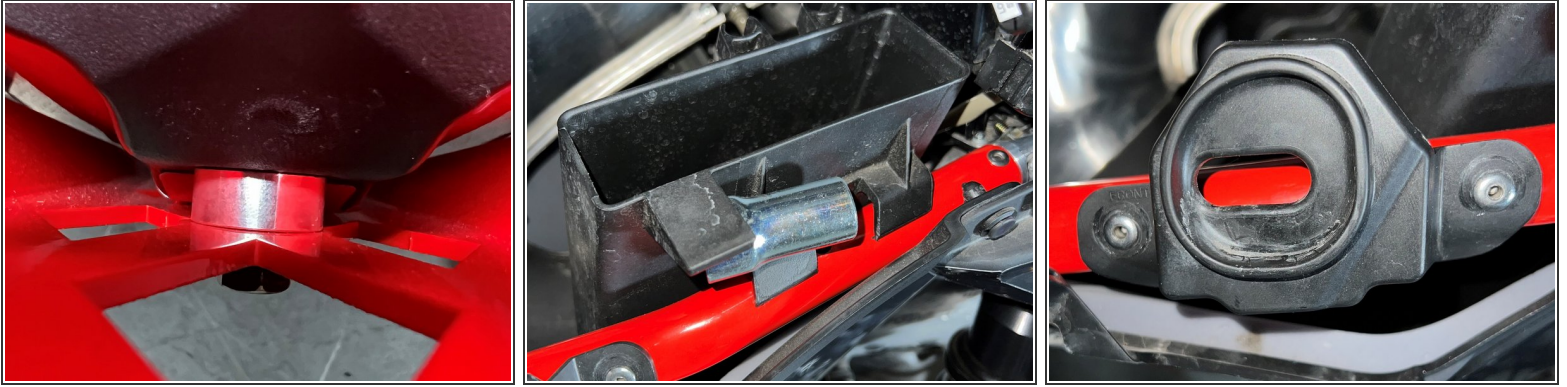
- **IMAGE 1** Once you have the spring off and the bolt out hang on to the spring bracket. This will be used in reassembly.
  - **IMAGE 2** Its also important to note the on the left hand side where the bumper bolts into place there is a ground wire. This will also need to be replaced during reassembly.
  - **IMAGE 3** Once the stock bumper is removed, you will need to make a small cut where the bumper comes out of the hood do to the slightly larger bumper tubes. A razor blade works well. Cut a small amount at a time and check fitment with the hood. Cut more if needed.
- i NOTE:** See online video for cutting advice.

## Step 6



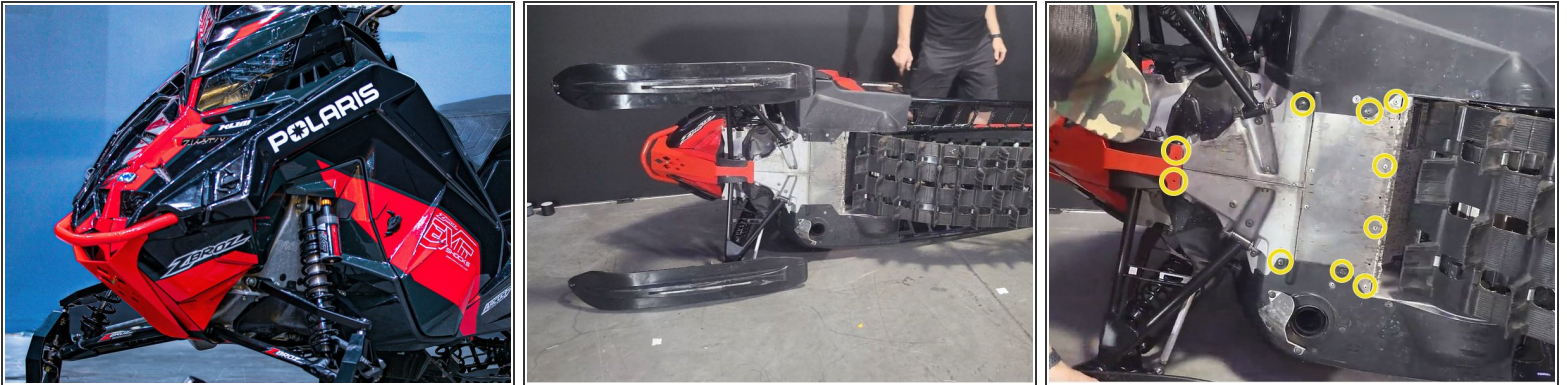
- **IMAGE 1** Before installing, assemble the front bumper. Place the billet bolt mounts into the bumper tube and rivet them in place with the provided rivets.
- **IMAGE 2** Using 4 more of the provided rivets, rivet the bash plate to the front bumper tube.
- **IMAGE 3** Once you have the bumper assembled, begin installing it by putting it in place and using the provided bolts to hold it in place. Remember to replace the ground wire as well as the spring bracket and the spring on the opposite side.
- Once you have those in place, use a 10mm tighten the nut and bolts to factory torque specifications.

## Step 7



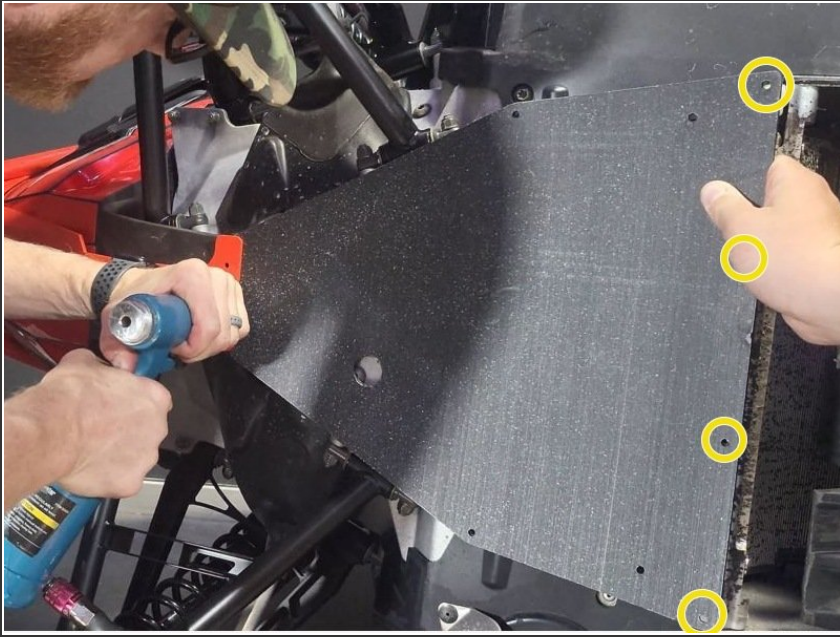
- **IMAGE 1** Using the last provided bolt and the provided aluminum spacer, bolt the bash plate to the sled and tighten to spec.
- **IMAGE 2** Place the belt holder and the plug wrench back into the bumper the same way they were in the stock bumper.
- **IMAGE 3** Replace the hood mounts using 4 of the provided rivets. Be sure they are placed on the same side and direction as the stock bumper.

## Step 8



- **IMAGE 1** Replace the hood and side panels.
- **IMAGE 2** Gently lay the sled on its side in order to install the skid plate.
- **IMAGE 3** Drill out the 10 rivets shown in the image for the skid plate.

## Step 9



- Place rivets in the 10 holes that you previously drilled. Place the sled back upright.

By installing this product, you acknowledge that the suspension of this vehicle has been modified. As a result, this vehicle may handle differently than that of factory-equipped vehicles. As with any vehicle, extreme care must be used to prevent loss of control or roll-over during sharp turns or abrupt maneuvers. Always wear seat belts, and drive safely, recognizing that reduced speeds and specialized driving techniques may be required. Failure to drive this vehicle safely may result in serious injury or death. Do not drive this vehicle unless you are familiar with its unique handling characteristics and are confident of your ability to maintain control under all driving conditions. Some modifications (and combinations of modifications) are not recommended and may not be permitted in your state. Consult your owner's manual, the instructions accompanying this product, and state laws before undertaking these modifications. You are responsible for the legality and safety of the vehicle you modify using these components.